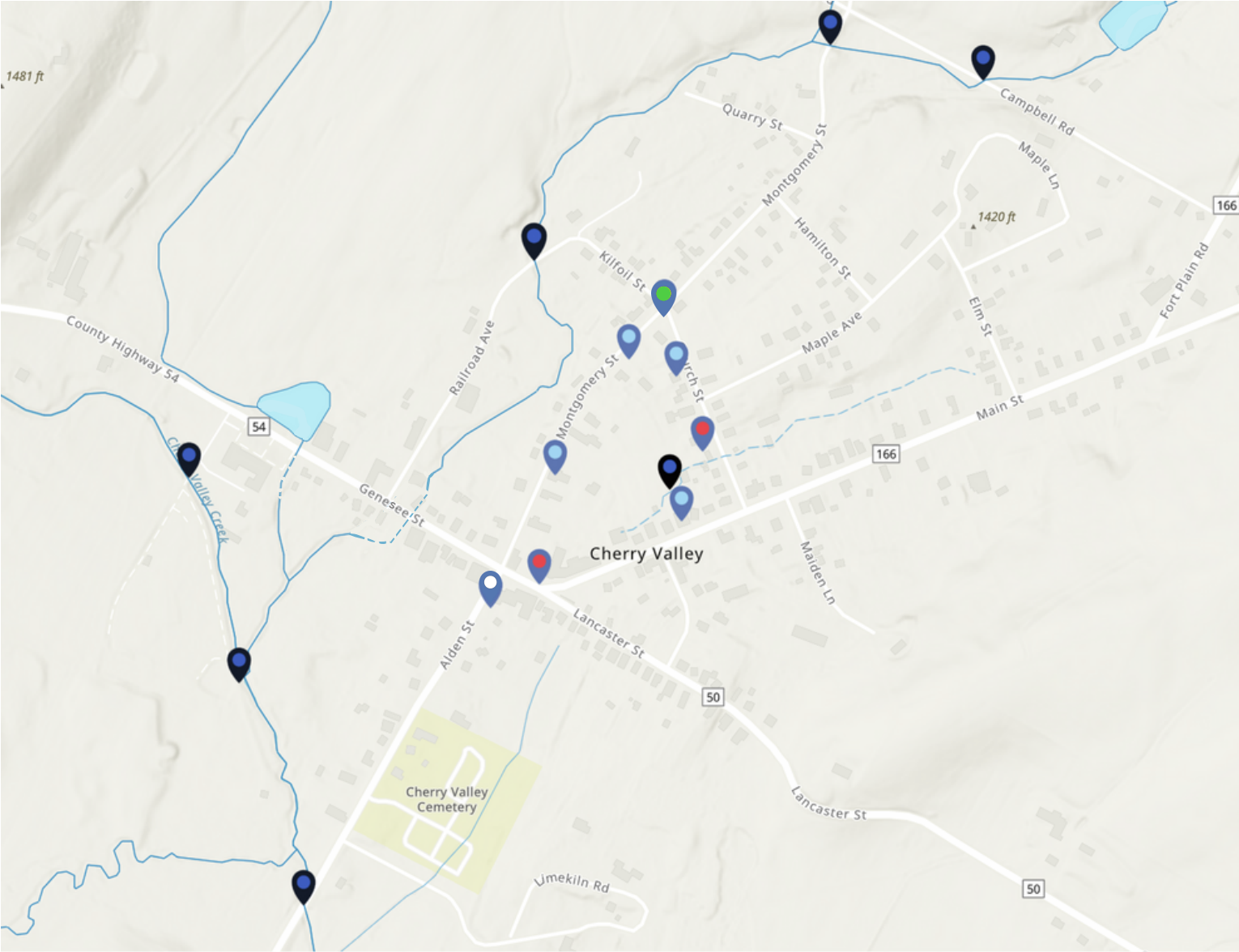


Cherry Valley Water Project Walking Map



Esri, NASA, NGA, USGS, FEMA | Esri Community Maps Contributors, © OpenStreetMap, Microsoft, Esri, HERE, Garmin, SafeGraph, GeoTechnologies, Inc, METI/NASA, USGS, I

Legend

- Litha Spring
- Stream Viewing Location
- Artesian Well (Groundwater Spring)
- Historic Site of Communal Animal Watering Trough
- Fire Well
- Creek - above ground
- Creek - below ground

*** Details on the back ***



Scan for more details & higher resolution on your phone

Cherry Valley Water Project

Walking Map



Built in 1893, the **Lithia Spring** was fed by water piped from a spring of lithia water located along Brimstone Creek (Whiteman Rd). The water was high in Lithium, among other minerals, and was hailed for its healing and uplifting properties.



Groundwater springs, sometimes referred to as **Artesian Wells**, flow into the basements of several buildings in the Village. Water from these springs is pumped from the basements or otherwise diverted to nearby stream channels.



Fire wells were dug in the 1880s to provide a water source for fire fighting within the Village. These wells were dug in response to the Village's first large-scale fire ca. 1864 and were roughly 4-5 feet wide and 7-9 feet deep.



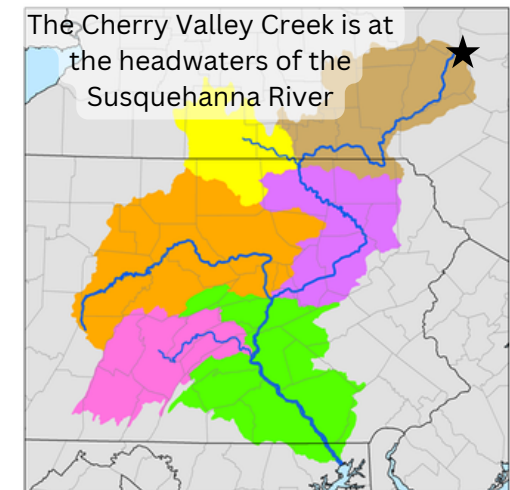
Historic Site of Communal Animal Watering Trough - Water from a nearby Artesian Well was piped over to supply water to troughs that served horses used in transportation along the Cherry Valley Turnpike.

The Cherry Valley Water Project is a creative partnership between the people and the water of Cherry Valley. It consists of a walking tour of the creek and a series of performing arts workshops that culminate in a site-specific experimental ensemble performance along the Cherry Valley Creek during the October Cherry Valley First Friday, October 6th, 2023. There will also be an exhibition of art, photos, and stories from the community about Cherry Valley Water at 25 Main Collective, with an Opening Party on October 6th. Everything is free and open to the public. Workshops require advance registration.

This map is a work in progress and wouldn't be possible without the hard work of Holly Waterfield and Susan Miller. If you have water features to add, or questions about what appears on the map, please write info@thetelegraphschool.org.



The Cherry Valley Water Project is a project of artist Angelica Dzeli Palmer, and funded by the NYS Rural and Traditional Arts Fellowship program. Funding for this project is made possible with support from the New York State Council on the Arts with support from the Governor's Office and the New York State Legislature, the Arts Council for Wyoming County and the The Cherry Valley Community Facility Corporation (The Old School).



TheTelegraphSchool.org

#CherryValleyWater